

AUDITIONS! AUDITIONS! AUDITIONS!



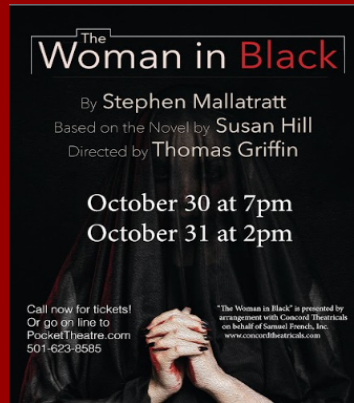
Wait Until Dark

SHOW DATES:

October
2, 3, 9, 10 at 7pm
and 4, 11 at 2pm

AUDITION DATES:

June 28 and 29
6pm - 8pm



The Woman In Black

SHOW DATES:

October 30, 7pm
October 31, 2pm!

AUDITION DATES:

July 12, 2-4pm
July 13, 6-8pm



Scrooge the Musical!

SHOW DATES:

December
4, 5, 11, 12 at 7pm
and 5, 6, 12, 13 at 2pm

AUDITION DATES:

August 22, 2-5pm
August 24, 6-8pm

For details for all three productions...

SEE BELOW!





Wait Until Dark

AUDITION DATES:

June 28 and 29 6-8pm

SHOW DATES:

October 2, 3, 9, 10 at 7pm

October 4, 11 at 2pm

In 1944 Greenwich Village, Susan Hendrix, a blind and capable woman, is imperiled by a trio of men in her own apartment. Can she outwit them? In a thrilling new adaptation, Jeffrey Hatcher has created a work that modernizes and honors Frederick Knott's original text.

CAST: 1W, 3M, 1 girl

Susan: mid 20's to early 30's, blinded in an accident, she is still adapting to her surroundings. **Sam:** 30's, Susan's new husband, a photographer.

Mike: 30's to 40's, an old buddy from service who comes to visit.

Carlino: 30's to 40's, a corrupt ex-cop.

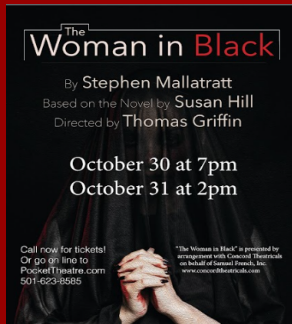
Roat: 30's to 40's, the villain. Sinister and menacing in a calm, dangerous way.

Gloria: 12-14, lives upstairs and helps Susan around the apartment.

(Note: Character ages refer to the age they present, not necessarily the age of the actor).

Wait Until Dark AUDITION FORMS will be available at auditions.





The Woman In Black

AUDITION DATES:

July 12, 2-4pm

July 13, 6-8pm

SHOW DATES:

October 30, 7pm

and 🎃 October 31, 2pm!

A lawyer hires an actor to tutor him in recounting to family and friends a story that has long troubled him concerning events that transpired when he attended the funeral of an elderly recluse. There he caught sight of the woman in black, the mere mention of whom terrifies the locals, for she is a specter who haunts the neighborhood where her illegitimate child was accidentally killed. Anyone who sees her dies! The lawyer has invited some friends to watch as he and the actor recreate the events of that dark and stormy night. A classic of the genre!

Cast:

Arthur Kipps ~ A middle-aged deeply traumatized solicitor. He is desperate to share his harrowing past to rid himself of the shadow it has cast on his life. In the framing story, he is timid and lacks theatrical imagination, but he transitions through various minor roles when acting out his memories.

The Actor ~ A vibrant, confident professional hired by Kipps to direct and perform the story. The Actor plays the role of the younger, arrogant, and inquisitive Arthur Kipps during the primary flashback sequence

The Woman in Black (Jennet Humfrye) ~ The terrifying, malevolent spirit of a woman who haunts the village and Eel Marsh House. Consumed by grief and vengeance over the tragic loss of her illegitimate child, her presence is an omen of doom—anyone who catches sight of her suffers the loss of their own child.

The Woman In Black AUDITION FORMS will be available at auditions.



Scrooge The Musical!

AUDITION DATES:

August 22, 2-5pm

August 24, 6-8pm

SHOW DATES:

December 4, 5, 11, 12 at 7pm

December 5, 6, 12, 13 at 2pm

In this timeless musical adaptation of Charles Dickens' *A Christmas Carol*, miserly Ebenezer Scrooge undergoes a profound experience of redemption over the course of a Christmas Eve night, after being visited by the ghost of his former partner Jacob Marley and the ghosts of Christmas past, present and future. Multiple roles available, including ensemble.

SCROOGE CAST INFORMATION (including links to sides and music tracks!):

Ebenezer Scrooge: Male | Stage Age: 55–75 | Bass-Baritone

A bitter, lonely businessman who has spent years shutting people out in pursuit of money and success. Scrooge experiences a profound transformation from hardened miser to joyful, compassionate human being. [Song 1](#), [Song 1 Audio with guide](#), [Song 1 Audio without guide](#), [Song 2](#), [Song 2 Audio with Guide](#), [Song 2 Audio without guide](#),

Bob Cratchit: Male | Stage Age: 30–45 | Lyric Baritone/Tenor

Scrooge's overworked but kind-hearted clerk. Bob is gentle, optimistic, devoted to his family, and determined to maintain hope despite financial hardship. He represents warmth, humility, and love in contrast to Scrooge's cynicism. [Song](#), [Audio with guide](#), [Audio without guide](#)

Mrs. Cratchit: Female | Stage Age: 30–45 | Non-singing

Bob Cratchit's practical and loving wife. She works tirelessly to care for her family and maintain joy despite difficult circumstances. Strong, compassionate, and resilient.

Kathy Cratchit: Female | Stage Age: 9–12 | Soprano Tiny Tim's middle sister. She is a kind, caring, and sweet-voiced girl who helps her family maintain a joyful, loving home despite their poverty. She has solo singing. [Song](#), [Audio with guide](#), [Audio without guide](#)

Tiny Tim: Any Gender | Stage Age: 8–10 | Child Voice

The youngest Cratchit child. Gentle, joyful, and full of hope despite physical illness. Tiny Tim serves as the emotional heart of the Cratchit family and symbolizes innocence and kindness. [Song](#), [Audio with guide](#), [Audio without guide](#)

Tom Jenkins: Male | Stage Age: 20–50 | Character Tenor/Baritone

A lively Londoner who helps bring energy and humor to the streets of Victorian London. Often featured in comic and ensemble-heavy musical moments. [Song](#), [Audio with guide](#), [Audio without guide](#)

Scrooge's Nephew: Male | Stage Age: 25–40 | Non-Singing

Cheerful, optimistic, and warm-hearted. Fred refuses to give up on Scrooge and continually offers him kindness and inclusion despite repeated rejection.

Jacob Marley: Male | Stage Age: 45–75 | Bass-Baritone

Scrooge's deceased business partner, condemned to wander in chains because of the selfish life he lived. Marley appears as a terrifying warning and catalyst for Scrooge's journey. [Song](#), [Audio with guide](#), [Audio without guide](#)

Ghost of Christmas Past: Female-presenting (flexible casting possible) | Stage Age: 15-30 | Soprano/Mezzo

A gentle, mysterious spirit who guides Scrooge through memories of his earlier life. Compassionate, graceful, and insightful. [Song](#), [Audio with guide](#), [Audio without guide](#)

Young Ebenezer (Teen/Young Adult): Male | Stage Age: 16-25 | Tenor/Bari-Tenor

The younger version of Scrooge before greed and bitterness took hold. Ambitious, hopeful, romantic, and deeply in love with Isabel. [Song](#), [Audio with guide](#), [Audio without guide](#)

Fezziwig: Male | Stage Age: 45–70 | Baritone

Scrooge's former employer. Generous, lively, and full of joy. Fezziwig embodies celebration, generosity, and leadership through kindness. [Song](#), [Audio with guide](#), [Audio without guide](#)

Mrs. Fezziwig: Female | Stage Age: 45–70 | Alto

Mr. Fezziwig's jovial wife. She is the consummate host who brightens up every room she walks in. [Song](#), [Audio with guide](#), [Audio without guide](#)

Isabel: Female | Stage Age: 20–35 | Soprano/Mezzo

Scrooge's former fiancée and lost love. Warm, intelligent, and compassionate. Isabel represents the life and happiness Scrooge abandoned in pursuit of wealth. [Song](#), [Audio with guide](#), [Audio without guide](#)

Ghost of Christmas Present: Male | Stage Age: 30–70 | Bari-Tenor

A joyful, energetic, larger-than-life spirit who shows Scrooge the beauty, generosity, and celebration of Christmas. Warm, funny, and charismatic. [Song](#), [Audio with guide](#), [Audio without guide](#)

Featured Ensemble: Any Gender | Any Age | All Voice Parts

These are members of the ensemble that have solo or small group singing. [Song](#), [Audio with guide](#), [Audio without guide](#)

Ensemble: Any Gender | Any Age | All Voice Parts

These are members of the ensemble that have no solo/small group singing. [Song](#), [SATB with guide](#), [Children with guide](#), [Ensemble no guide](#)

SCROOGE AUDITION FORM HERE ↓ ↓ ↓ ↓ ↓ ↓

https://docs.google.com/forms/d/e/1FAIpQLSfnhDufGnrnaii4hz0TRh_Q4flyeyglca_rLmaepfw84cMPhw/viewform